

For a full list of programs and descriptions please visit our website at [www.washoecountylibrary.us](http://www.washoecountylibrary.us).

# May 2019

## Library News & Events

Connecting people with information, ideas and experiences to support an enriched and engaged community, one person at a time.



### Tsurunokai

Wednesday, May 1, 4 pm, Sierra View Library  
Tuesday, May 21, 4:30 pm, Duncan/Traner Community Library  
(in multi-purpose room @ Duncan Elementary School)  
Wednesday, June 5, 4 pm, Incline Village Library



### Erika Paul Trio

Thursday, May 9, 10:30 am  
Senior Center Library



### Brūka's Theatre for Children

Saturday, May 11, 11 am, Northwest Library  
For more performances in June - please see our website.



### Beaupromo Puppetry

Saturday, May 25, 11 am, Northwest Reno Library  
Saturday, June 1, 11 am, Sparks Library



### Senior Series Your Time is Now!

Thursday, May 2, 2 pm, South Valleys Library  
Thursday, May 9, 2 pm, North Valleys Library  
Thursday, May 16 & 23, 2 pm, Sparks Library  
Thursday, May 30, 2 pm, Spanish Springs Library  
Topic: Celebration of Older Americans Month

### Delayed Opening:

Thursday, May 16 all regularly scheduled branches will open at 2 pm for staff training and Sparks will close at 5 pm.

### Library Closures:

Monday, May 27 for Memorial Day  
North Valleys Library will also be closed Tuesday, May 28.



### Summer Reading Program

Starts June 1



### Building Your Family Tree

Fridays, May 3 - 24, 10:30 am,  
Downtown Reno Library



### Sierra Watercolor Society presents Art Angels

Saturday, May 4, 4:30 pm, South Valleys Library



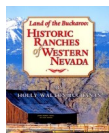
### Sierra Nevada Journeys presents Variety is the "Science" of Life

Monday, May 13, 4 pm  
Downtown Reno Library, Sierra View Library and Sparks Library



### Historic Reno Preservation Society Harvest of Homes Tour Retrospective

Wednesday, May 15, 5:30 pm, Northwest Reno Library.



### Historic Reno Preservation Society Historic Ranches of Western Nevada

Sunday, May 19, 12:30 pm, Downtown Reno Library



### Great Basin Young Chautauqua

Tuesday, May 21, 3:30 pm, Sparks Library  
Thursday, May 23, 3:30 pm, Sierra View Library



### Friends of Washoe County Library

For details, please visit [www.washoelibraryfriends.org](http://www.washoelibraryfriends.org)  
or call 775-324-5522

All programs are free and open to the public. Visit us online at [washoecountylibrary.us](http://washoecountylibrary.us) to discover more events, search for books, and explore online resources.

WASHOE COUNTY LIBRARY SYSTEM [washoecountylibrary.us](http://washoecountylibrary.us)



# Spanish Springs Library May 2019

## Ongoing Events

Family Games Day  
Sunday, May 5, 10-5 pm

Knitting  
Sundays, May 5 & 19, 1 pm

PAWS 2 Read  
Sunday, May 12, 1:30-2:30 pm

Teen Miuchi  
Tuesday, May 14, 5-7 pm

Scrapbooking  
Sunday, May 26, 10 am

Story Time  
Mondays, 10:30 am

Code It, Build It  
Wednesdays, 4 pm

Toddler Time  
Thursdays, 10:30 am

Crochet  
Thursdays, 3 pm

Movie Matinee: *Spiderman: Into the Spider-Verse*

Sunday, May 12  
3 pm



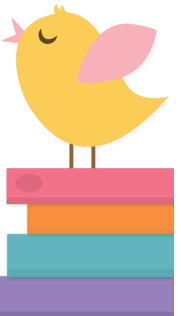
## Tuesday Book Club

Tuesday, May 14  
1 pm  
*Fly Girls* by Keith O'Brien



## Mystery Book Club

Sunday, May 19  
1 pm  
*Murder of Mary Russell*  
by Laurie R. King



## Staff Day

Thursday, May 16

Spanish Springs Library opens @ 2 pm



## STEAM @ SPANISH SPRINGS

Tuesday, May 14, 4-5 pm

Build a bridge from straws and see how much weight it can hold!



## Mother's Day Craft

Sunday, May 12, 10-5 pm



Come in anytime today to make a foil art craft for mom!

Older Americans Month Thursday,  
May 30, 2-3 pm

Sheriff Balaam, Washoe County Sheriff



Meet Sheriff Balaam in a talk focusing on hot topics impacting Seniors.

CONNECT, CREATE, CONTRIBUTE MAY 2019



Spanish Springs Library  
7100-A Pyramid Highway  
Sparks, Nevada 89436  
775-424-1800

Sunday  
Monday  
Tuesday  
Wednesday-Thursday  
Friday-Saturday

10 am-5 pm  
10 am-6 pm  
10 am-7 pm  
10 am-6 pm  
Closed

WASHOE COUNTY LIBRARY SYSTEM [washoecountylibrary.us](http://washoecountylibrary.us)

